

visionapp Remote Desktop (vRD)

Version Overview



visionapp Remote Desktop 2009 at a Glance

visionapp Remote Desktop is a powerful tool for managing and accessing multiple servers and desktops. It is simple to administer Windows, Citrix, Linux/UNIX and Macintosh systems via the integrated connection protocol. visionapp Remote Desktop is a command and control center, where you can drive any type of system remotely. We call it the "Universal Admin Cockpit", able to directly access, control, and integrate external applications.

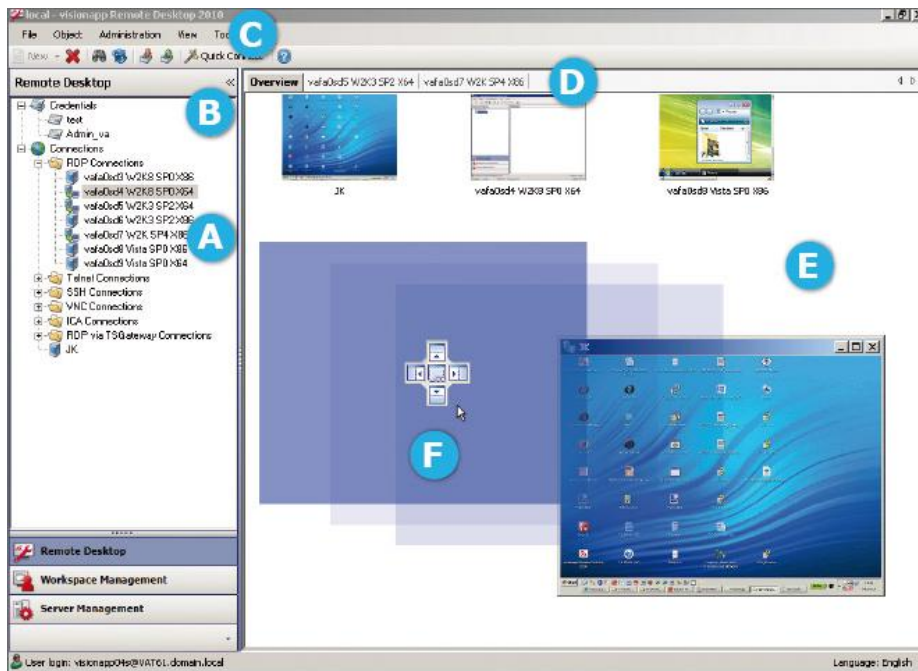
Due to the integration of external applications, you can tailor visionapp Remote Desktop to your individual needs. The Universal Admin Cockpit eases and speeds up daily access to your administration tools via a central console. The power and ease of use of visionapp Remote Desktop has impressed more than 200,000 administrators worldwide.



Main benefits of visionapp Remote Desktop 2010

- > The universal Admin Cockpit provides a central console for multiple admin tools
- > Significant time saving through easy handling
- > Effective and efficient management of connections to remote computers via protocols
- > Integrate all external applications and websites for your daily work
- > In database mode, administrators can work simultaneously with the same objects – supported by a detailed permission administration
- > Logging of errors, changes and accesses to vRD 2009
- > Connection history provides an overview of recently connected computers
- > Overall view of all computers connected
- > Secure access to systems via Microsoft TS Gateway (using SSL), Network Level Authentication or via server authentication

visionapp Remote Desktop 2010 - Quick guide



A:
Folder Structure - Computers can be logically grouped according to the company's structure. Connected users are displayed underneath the active connections.

B:
Login Credentials - Central storage of the information needed to access remote computers.

C:
Menu Bar - Use icons to perform administrative tasks like export/import with a single click.

D:
Tabs - Overview tab with all active connections as thumbnails - each active connection in a separate tab.

E:
Display Options - Individually display active connections for instance in a separate window.

F:
Position Navigator - Individually arrange active connections in separate windows. Create an overall view of all active connections.

Storing Configuration Data	vRD 2008	vRD 2009	vRD 2010	Remarks
Save current settings to Registry	✓	✓	✓	Connections and Credentials
Save current settings to a .xml file	✓	✓	✓	Connections and Credentials
Save current settings to one or more databases	✓	✓	✓	Connections and Credentials
Automatic saving of local settings	⊘	⊘	✓	In case of problems, it is possible to use the last settings to work.

Usability	vRD 2008	vRD 2009	vRD 2010	Remarks
Multiple instances	⊘	✓ ⁽¹⁾	✓ ⁽¹⁾	With vRD 2009 multiple instances of vRD may be started, so you can optionally work for instance in local and in database-mode. (1) Full version only
Start instances directly	⊘	✓	✓	Command line parameters allow to start a specific instance directly when calling the application.
Online help	✓	✓	✓	On demand you will get additional information. With vRD this information is available also for dialogues and context windows.
Menu item "Support"	⊘	✓	✓	You may request support directly from the console.
News and Updates page	⊘	⊘	✓	Provides a clear overview of important information such as update possibilities.
Check of components	⊘	✓	✓	Check very easily, if the components necessary for working with vRD 2009 are working properly.
Tree view (Navigation Pane)	✓	✓	✓+	Objects are displayed in hierarchical order similar to Windows Explorer and thus may be managed very easily. In vRD 2010, the tree view can be hidden altogether with a single mouse click.

Usability	vRD 2008	vRD 2009	vRD 2010	Remarks
Call connections directly from the icon bar	☒	☒	✓	With the tree view hidden, existing connections can be accessed from the icon bar.
Quick and easy connection to Computers via mouse click	✓	✓	✓	Connection to a computer may easily be established via single mouse click.
Disconnect connections using the middle mouse button or scroll wheel	☒	☒	✓	An active connection can be easily and quickly disconnected by clicking on the tab title with the middle mouse button.
Limit the number of concurrent connections	☒	☒	✓	With only a limited bandwidth available, it is possible to limit the number of connections in order to optimize resources.
Reconnect directly from the tab's tool bar	☒	☒	✓	Simplifies working with connections.
Hotkey support	✓	✓	✓	Hotkeys can be used for quick access to common administrative tasks like renaming objects (F2).
Create folders for connection objects	✓	✓	✓	Individual view can be customized.
Manage login credentials in folders	☒	☒	✓	Better and clear overview, especially in large environments.
Manage external applications in folders	☒	☒	✓	Better and clear overview, especially in large environments.
Change object sort order	✓	✓	✓	Sort order may be customized individually.
Sorting function just like Windows	☒	✓	✓	Folders at the upper area, single objects beneath.
Sort connections alphanumerically	✓	✓	✓	Sorting connections makes finding objects quite easy particularly in large environments.
Individually change the order of objects using the context menu	☒	☒	✓	Objects can be moved up or down to create an individual order. In Database mode, this order is saved for each user separately.

Usability	vRD 2008	vRD 2009	vRD 2010	Remarks
Search option	✓	✓	✓	Via "Search" option (Strg+F) particularly in large environments computers may be found very easily.
Assign credentials to folders	✓	✓	✓	One credential setting may be assigned to each folder.
Different icons for public and private login credentials	⊘	⊘	✓	Distinguishing between the types of login credentials simplifies work.
Multi-Language-Support	✓	✓	✓	User Interface may be switched between German and English.
Copy connections	✓	✓	✓	Connections can be copied easily via the context menu or via copy & paste.
Move connections	✓	✓	✓	Connections may be moved easily via the context menu or via drag & drop.
Multi selection	⊘	✓	✓	Working on multiple objects simultaneously.
New connection name as computer name	✓	✓	✓	On default a computer to connect to will automatically have the name of the new connection.
User-defined icons for active connections	⊘	⊘	✓	Simplifies the identification of specific connections.
View settings will be saved when application is closed	✓	✓	✓+	If vRD 2008 or 2009 is connected to a database, the view settings will be saved automatically on application shutdown. When the application is reopened, users will have their last view settings again. With vRD 2010 also possible in local mode.
Restore disconnected connections at restart	⊘	⊘	✓	Simplifies resuming a previous activity.
No possibility to create more than one object with the same name within one folder	✓	✓	✓	This avoids errors and obscurities.
Import Computers directly from Active Directory	✓	✓	✓+	Import a big number of computers from very easily. With vRD 2010, the connection settings of the objects can be adjusted when imported.

Usability	vRD 2008	vRD 2009	vRD 2010	Remarks
Improved connection speed	⊘	⊘	✓	Multiple connections can be opened in a folder in quick succession.
Splash Screen	✓	⊘ (1)	⊘ (1)	Splash Screen appears on start-up. (1) Full version only

Display	vRD 2008	vRD 2009	vRD 2010	Remarks
Tab view	✓	✓+	✓+	Each active connection will be displayed on its own tab. As of vRD 2009 the logged in user and the used protocol can be displayed at the tab as an option. With vRD 2010, it is also possible to perform administrative tasks (such as restarting) from a tool bar.
List of tabs	⊘	⊘	✓	Provides the administrator with a clear view of active connections.
Colored tabs	⊘	⊘	✓	Simplifies distinguishing between different connections.
Overview tab	✓	✓	✓	All active connections are being displayed in one view. Via single mouse click on a thumbnail the view will change to the according tab. In addition the size of the thumbnails may be configured.
Directly navigate to the "Overview" tab	⊘	⊘	✓	Simplifies work when dealing with a large number of connections.
Multi-Monitor-Support	✓	✓+	✓+	Enables views on one or multiple screens. With vRD 2008 and 2009 also possible with separate windows. With vRD 2009 a connection may be opened on a certain monitor. With vRD 2010, it is also possible to automatically open a connection across several screens.

Display	vRD 2008	vRD 2009	vRD 2010	Remarks
Smart Sizing of connections (RDP or VNC)	⊘	✓	✓	You may choose a screen resolution, which exceeds the resolution of your screen. In this case the desktop of the connected computer will always be displayed completely without scroll bars even when you enlarge or minimize the corresponding window.
UltraVNC DSM encryption	⊘	⊘	✓	Secure transmission of information.
VNC Proxy	⊘	⊘	✓	Integrates VNC Proxy as central component.
Launch new connections directly in full screen mode	✓	✓	✓+	In full screen mode working often is much easier. In vRD 2010, using RDP, the taskbar of the local computer is no longer displayed.
Launch new connections directly in a new window	✓	✓	✓	Separate windows may be moved between multiple monitors.
Dynamic screen-sizing per session	✓	✓	✓	The active tab may be displayed in a separate window via <i>Drag & Drop</i> or by just Double-clicking it. By the same way it may be reversed. From a once chosen separate window the Full-Screen-Mode can be activated by another Double-click on the window title. This action may be reversed by the minimize command.
Live Overview	✓	✓	✓	In the work area you may arrange the connection windows individually – this offers Live-View-Options.
Highlighted active tab	✓	✓	✓	For a better overview the tab that has the focus will be highlighted.
Hide status bar	⊘	⊘	✓	Increases the space available for the work area.
vRD icon in the information area when the application is minimized	⊘	⊘	✓	Allows to call vRD whenever required.

Connectivity	vRD 2008	vRD 2009	vRD 2010	Remarks
Connect via RDP	✓	✓	✓	Access to Windows computers.
Connect via ICA	⊘	✓	✓	Access to Citrix XenApp.
Connect via VNC	⊘	✓	✓	Access to, for instance, Macintosh.
Connect via SSH	⊘	✓	✓	Access to, for instance, Unix/Linux.
Connect via Telnet	⊘	✓	✓	For instance for troubleshooting.
Connect via HTTP/S	⊘	✓	✓+	Access to browser-based end devices.
Connection wizard	✓	✓	✓	There is a wizard available to set up new connections.
Integrate external applications	⊘	⊘	✓	Wide range of options (e.g. automatic establishing of a VPN tunnel) to use vRD as central console.
Workspace Control	✓	✓	✓	Users may switch between active connections without restarting the application.
Reconnection	⊘	✓	✓	A session to a computer may be reconnected by just one click. In vRD 2010 it is possible to disable the "Connect all" function.
Connect/Disconnect for all computers within one folder	✓	✓	✓	All computers within one folder may be connected or disconnected at a time.
Restart / Shut down of all connections in a folder	⊘	✓	✓	Restart / shut down of all computers simultaneously.
Quick Connect	✓	✓+	✓+	Connect to a computer without creating an explicit connection. Quick Connect may be launched by clicking F9 key. As of vRD 2009, it is also possible to specify the protocol to be used. With vRD 2010, it is possible to specify the port, login credentials or other detailed settings. In addition, the last 10 successful connections are displayed.

Connectivity	vRD 2008	vRD 2009	vRD 2010	Remarks
Connect as another user	✓	✓	✓	Logging on with another user than assigned.
Automatic reconnect after rebooting a computer	✓	✓	✓	After rebooting a computer vRD will automatically reconnect to that computer. A manual reconnect is no longer necessary. The reboot is displayed in tree view with an according symbol.
Administrative Features	✓	✓	✓	Remote Features like Shut-down, Reboot or Wake-On-LAN may now be initiated via the context-menu.
Context menu	✓	✓	✓	Independent from the configured connection settings with vRD the display mode for a connection may be changed via the context menu without changing the saved settings.

Configuration Management	vRD 2008	vRD 2009	vRD 2010	Remarks
Console for centralized access	✓	✓	✓	All features are available from one User Interface.
Auto-Fit tabs	✓	✓	✓	When connecting to a computer the display will automatically adjusted to the tab size.
Individual display resolution per tab	✓	✓	✓+	Support for a large number of screen resolutions – in vRD 2010 also individually configurable.
Remote session may be displayed in full-screen-mode	✓	✓	✓+	Active session will be displayed in full screen mode. In vRD 2010, using RDP, also without the local computer's taskbar.
Remote session may be displayed in a <i>separate window</i>	✓	✓	✓	Separate window may be placed individually on the desktop.
Launch a console session	✓	✓	✓	Working in console session might be necessary for dedicated administrative tasks (e.g. taking over a still open, local session in order to close it).

Configuration Management	vRD 2008	vRD 2009	vRD 2010	Remarks
Default settings	✓	✓	✓	Default settings that apply to all new connections may be defined.
Object description	✓	✓	✓	Additional information may be added (e.g. location of the computer). Will be displayed as tool tip.
Port Settings	✓	✓	✓	According to the company's rules the port may be adjusted.
When creating credentials the network may be browsed for users	✓	✓	✓	Defining of users, who may connect to terminal servers, will be simplified, thus.
Credentials will be inherited from the above level folders	✓	✓+	✓+	It is not necessary to create credentials for each object. As of vRD 2009 also possible across multiple folder levels.
Local drives, printers, serial ports, audio and smart cards will be connected	✓	✓	✓	Settings are similar to those available with standard RDP or ICA connections.
Color depth can be defined	✓	✓	✓	Settings are similar to those available with standard connections.
Remote Sound Support	✓	✓	✓	Settings are similar to those available with standard RDP or ICA connections.
Start program when the connection has been established (RDP)	⊘	⊘	✓	A program is started on the remote computer as soon as a connection has been established.
Windows-Hotkeys	✓	✓	✓	Local Hotkeys will be available in the remote session.
Configure display options (wallpaper, show window content while dragging, designs, bitmap caching, font smoothing)	✓	✓	✓	Settings are similar to these available with standard RDP or ICA connections.
Define MAC-Address (required for Wake-On-LAN)	✓	✓	✓	Using the MAC address a computer may be restarted remotely via Wake-On-LAN (Magic Package).

Configuration Management	vRD 2008	vRD 2009	vRD 2010	Remarks
Set web URL	✓	✓	✓	Establish a connection to browser-based devices such as a server's Management Board via http or HTTPS. With vRD 2010, these connections are automatically displayed as tabs.
Importing connections	✓	✓	✓	A set of connections may be imported via a .csv file ¹ or directly from Active Directory. Combined with configured default settings this allows to set up a huge range of computers very quickly.
Multiple simultaneous administrators	✓	✓	✓	Available only when in database-mode. Users authorized on the database may work parallel and thus spread the workload. Multiple administrators may work on the same stored connections.

Security	vRD 2008	vRD 2009	vRD 2010	Remarks
Log on dialog	⊘	✓	✓	Work with another user than logged in at Windows.
Display connection information	✓	✓+	✓+	Underneath the computer object all active user sessions will be displayed. Even if a session is inactive information will be displayed via RDP. With vRD 2009 this is also possible for all objects in a folder. In addition, it is possible to display connection details such as the name of the local user or the local computer.
Network Level Authentication	⊘	✓	✓	Only via RDP.
Server authentication	⊘	✓	✓	Only via RDP.
Supporting Microsoft Terminal Services Gateway	⊘	✓	✓	Only via RDP. In vRD 2010 also possible with separate login credentials.

¹ Syntax for CSV-file: Connection Name, IP address, computer name, MAC address, web URL, Protocol, Port, Folder (you may also use other delimiters than comma).

Security	vRD 2008	vRD 2009	vRD 2010	Remarks
Log Off Users	✓	✓+	✓+	Connected users may be logged off one by one through vRD 2008 – as of vRD 2009 all users of a certain computer.
Customized messages (via RDP or ICA)	⊘	✓	✓	Users may be informed about planned activities on a computer.
Encryption of data (via ICA or VNC)	⊘	⊘	✓	Secure transmission of information.
Defining User specific credentials for accessing computers	✓	✓	✓	It is possible to access the computer objects using different roles (e.g. local or domain admin).
Use local computer for login	⊘	⊘	✓	Local information is used.
Session credentials will be stored centrally	✓	✓	✓	When a password has to be changed not all computer connections have to be adjusted. Credentials may be changed centrally.
Session credentials will be encrypted and password protected when saved	✓	✓	✓	The data is safe, because it cannot be used elsewhere.
Credentials are visible and changeable for the creator only	✓	✓	✓	In database mode it is up to the creator to decide, who may use the credentials.
Log off / disconnect all active connections	⊘	⊘	✓	Allows the vRD administrator to properly terminate his active connections before exiting the program.
Permission administration	⊘	✓	✓	In database mode you may grant access to objects and functions of vRD. In vRD 2010 also possible for single objects. Therefore these restricted objects are no longer visible to that user.
Connect to database through encrypted connection string	⊘	⊘	✓	Connecting to a database is performed without entering a username or password.
Access to a database with local user account	⊘	⊘	✓	Encanced variability for access.

Reporting	vRD 2008	vRD 2009	vRD 2010	Remarks
Error Log	✓	✓	✓	Available only in database mode. It is possible to get detailed information about errors happened.
Change Log	✓	✓	✓	Available only in database mode. It contains all data related to every action performed in the console (e.g. saved objects or changed object settings).
Security Log	✓	✓	✓	It contains information related to all logon/logoff events. vRD 2010 also logs the users who have worked with the database.
History	✓	✓+	✓+	Used connections will be displayed and can be reopened. Furthermore the connections can be sorted. This is helpful particularly in large environments. As of vRD 2009 start and end of a session, the used protocol and the user are displayed.
Log	⊘	⊘	✓	Allows to store individual information for each connection.

Supported OS	vRD 2008	vRD 2009	vRD 2010	Remarks
Windows XP	✓	✓	✓	
Windows XP 64bit	✓	✓	✓	
Windows Vista	✓	✓	✓	
Windows Vista 64bit	✓	✓	✓	
Windows 7	⊘	⊘	✓	
Windows 7 64bit	⊘	⊘	✓	
Windows Server 2003	✓	✓	✓	
Windows Server 2003 64bit	✓	✓	✓	

Supported OS	vRD 2008	vRD 2009	vRD 2010	Remarks
Windows Server 2008	✓	✓	✓	
Windows Server 2008 64bit	✓	✓	✓	

Supported Protocols	vRD 2008	vRD 2009	vRD 2010	Remarks
RDP 5.x	✓	✓	✓	Access Windows systems
RDP 6.0	✓	✓	✓	Access Windows systems
RDP 6.1	✓	✓	✓	Access Windows systems
ICA 10.2x	⊘	✓	✓	Access Citrix systems
VNC	⊘	✓	✓	Integrated in vRD 2009, for instance to access Mac systems.
SSH	⊘	✓	✓	Provided through PuTTY integrated in vRD 2009, for instance to access X11 systems.
Telnet	⊘	✓	✓	Provided through PuTTY integrated in vRD 2009.
HTTP/S	⊘	✓	✓+	Access to browser-based devices. In vRD 2010 directly integrated as tabs.

Supported Database	vRD 2008	vRD 2009	vRD 2010	Remarks
Microsoft SQL 2000	✓	✓	✓	
Microsoft SQL 2005	✓	✓	✓	
Microsoft SQL 2008	⊘	✓	✓	
Microsoft SQL Express	✓	✓	✓	

Database Connection Wizard	vRD 2008	vRD 2009	vRD 2010	Remarks
Connect to an existing database	✓	✓	✓+	If a vRD database was already installed, you may connect to this database. In vRD 2010, connection is also possible through an encrypted connection string.
Create a new Database on an existing SQL-server	✓	✓	✓	A new, empty database will be created exclusively for vRD.
Create a new instance of Microsoft SQL Express including a database	✓	✓	✓	SQL Express will be installed and an empty vRD database will be created.

Backup and Restore	vRD 2008	vRD 2009	vRD 2010	Remarks
Settings can completely be saved to a backup	✓	✓	✓	Backup also possible through a database.
Selected computer objects can be exported or imported	✓	✓	✓	It is possible to save selected settings.
Using backup files in different environments	✓	✓	✓	Backup files can be used in environments different from the originating environment.
Exported settings are password-protected	✓	✓	✓	At any time the data is safe, since unauthorized persons do not know the password.
Export of connections as a .csv file	⊘	✓	✓	Exported connection data either may be edited and/or reused.

Installation	vRD 2008	vRD 2009	vRD 2010	Remarks
Unattended installation	✓	✓	✓	
Microsoft .NET Framework	.NET 2.0	.NET 2.0	.NET 2.0	

Update/Upgrade	vRD 2008	vRD 2009	vRD 2010	Remarks
Upgrade from previous versions	✓	✓	✓	With vRD 2010 settings of vRD 1.5, vRD 2008 and vRD 2009 can be used.
Using mRemote-settings	⊘	✓	✓	The changeover from mRemote to vRD will be simplified.

Legend:

- ⊘ not supported
- ✓ supported
- ✓+ improved

Functions of the Different vRD versions

vRD 2008 in evaluation mode

- > Usage for 30 days
- > Neither export nor backup of objects

vRD 2008 Express

- > Expiration date: March 31, 2009
- > No database mode
- > 5 credentials possible
- > 15 connection objects possible

vRD 2008 as commercial full version

- > No limitations

vRD 2009 in evaluation mode

- > Usage for 30 days (both local and database mode)
- > Neither export nor backup of objects
- > 3 concurrent connections

vRD 2009 as freeware

- > No database mode, available in local mode only
- > Limited to 3 concurrent connections
- > 15 objects may be exported backed up
- > No email or hotline support (support forum can be used)

vRD 2009 as commercial full version

- > Database mode and local mode
- > Unlimited number of concurrent connections (licensing per "Named Administrator")
- > Unlimited exporting and saving of objects
- > Full Support (Email, Hotline oder Support-Forum)
- > Upgrade & Support Package includes upgrades for the selected period

vRD 2010 in evaluation mode

- > Limited to 30 days (local or database mode)
- > Exporting and saving limited to 15 objects (connections or external applications)

vRD 2010 as freeware

- > No database mode, available in local mode
- > Limited to 3 concurrent connections
- > Exporting and saving limited to 15 objects
- > External applications are not supported
- > No email or hotline support (support forum can be used)

vRD 2010 as full version

- > Database mode and local mode
- > Unlimited number of concurrent connections (licensing per "Named Administrator")
- > Unlimited number of external applications
- > Unlimited exporting and saving of objects
- > Full support
- > Upgrade & Support Package includes upgrades for the selected period

Disclaimer

Disclosure and Warranty

The information, concepts, and ideas contained in this document are the property of visionapp AG. No part of this document may be disclosed or reproduced in any form without written permission of visionapp AG. Any violation thereof will be pursued.

All brand names and product names used in this document are trademarks of their respective holders and are recognized as such.

Any product descriptions or representations in this document are for identification purposes only and are not to be construed as a warranty of specific properties or guarantee or warranty of any other type. visionapp shall assume no liability, either explicit or implied, for the documentation.

All rights reserved ©visionapp AG, August 09

About visionapp

visionapp is an internationally renowned provider of application delivery and cloud/SaaS solutions. The visionapp Group offers professional consulting, technologies, and services that facilitate the smooth and efficient centralized delivery of applications as a service.

The company's pioneering application delivery concept and its vADF methodology are the result of close collaboration between its three business units - visionapp Solutions, Software Products, and Hosting Services. These field-proven solutions allow visionapp customers to significantly reduce IT costs, improve user experience, and increase agility.

visionapp AG, headquartered near Frankfurt, Germany, is a private corporation with subsidiaries and offices in the UK, USA, Austria, and Switzerland employing more than 160 people worldwide.

Further Information

visionapp AG
Head Office Frankfurt am Main
Helfmann-Park 2
65760 Eschborn
Germany
www.visionapp.com