

visionapp Remote Desktop 2010

Software + Services from visionapp

VISIONAPP™

visionapp Remote Desktop

visionapp Remote Desktop 2010 – the Universal Admin Cockpit

visionapp Remote Desktop is the leading tool for administrative access to remote computers. Featuring integrated connection protocols, the tool allows you to manage Windows, Citrix, Linux/UNIX- and Macintosh systems. Providing direct access to any external applications, visionapp Remote Desktop is a true Universal Admin Cockpit.



Functionality

visionapp Remote Desktop provides many features designed to simplify system administration. Besides making it easy to administer remote connections, the tool allows you to integrate and access many applications and websites needed for administrator's daily work. The Universal Admin Cockpit allows you to customize the central console to specific individual needs. visionapp

Remote Desktop is ideal for administrators who require multiple simultaneous connections to different systems. Besides RDP (Remote Desktop Protocol), the tool supports ICA, VNC, HTTP/S, and more.

Ease of use

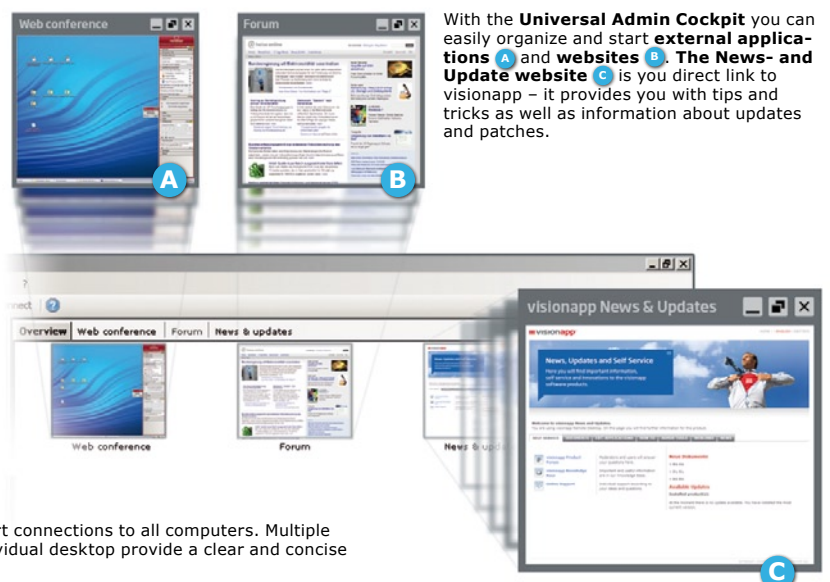
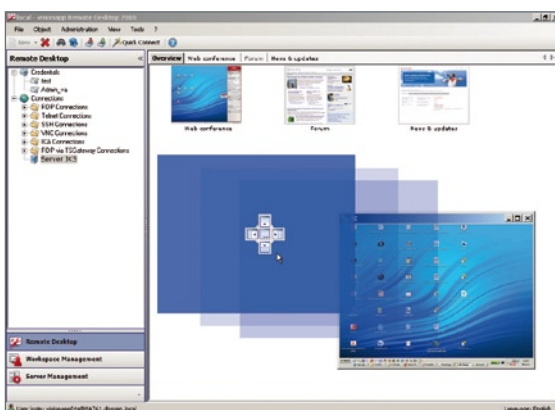
Administrators perform many recurring tasks on remote servers and workstations, such as renaming objects or enabling connections. Connection objects and external applications can be conveniently managed in folders. For large environments, the integrated search function helps to locate specific computers and users.

Security as a central feature

With visionapp Remote Desktop, administrators can use secure server authentication to access remote computers via RDP. It supports Network Level Authentication (NLA) and allows access to a Microsoft Terminal Services

Key Benefits

- > Integration of and direct access to external applications and websites
- > Configure administrative permissions in database mode
- > Control Windows, Citrix, Linux/UNIX, Macintosh, and browser based systems
- > Log access, errors and modifications (in database mode only)
- > Connect over multiple protocols, including RDP, ICA, VNC, SSH, Telnet and HTTP/S
- > Extended RDP security functions include: Network Level Authentication, support for Microsoft Terminal Services Gateway, and server Authentication



With visionapp Remote Desktop you can easily administer and start connections to all computers. Multiple display options like a global view of all active connections and an individual desktop provide a clear and concise overview for the admin.

Gateway. With visionapp Remote Desktop, RDP can also access in-house terminal servers via the Internet without having to open the RDP port in the organization's firewall. Administrators can transmit encrypted data even through the VNC or ICA protocols.

Database mode

In large IT infrastructures, several administrators often have to access the same connections at the same time.

All login credentials and connection objects may be stored in a central database. With visionapp Remote Desktop connected to this database it is possible for multiple administrators to create, change, view, and modify settings according to the assigned permissions.

Connection settings

Many administrators have to perform the same task on multiple connections. visionapp Remote Desktop allows administrators to apply many tasks across multiple connections with a single click! For instance, you can simultaneously connect or disconnect all servers within a folder with a simple double-click. The Quick Connect feature allows you to start individual connections without previously creating a connection object. Regardless of the connection settings you can freely

select the display mode, the protocol to be used or the user for a specific connection.

Reporting

The Connection History displays a list of the most recently used connections and allows you to reopen them. In database mode, visionapp Remote Desktop provides various logs (errors, changes, security) that make it easier for you to trace events, activities and a logbook for individual information.

Configuration settings

You can configure the supported protocols – RDP, ICA, VNC, SSH and Telnet – according to your specific needs. In addition, visionapp Remote Desktop enables direct access to browser-based devices via HTTP/S.

Backup and Restore

All settings can be backed up in a password-protected file and restored. You can export and reimport selected connection objects or external apps whenever necessary.

News and Updates

A website, directly accessible from visionapp Remote Desktop, provides the administrator with tips and tricks, as well as information about updates or patches.

» *visionapp Remote Desktop is awesome. Couldn't live without it now.* «

Richard Morgan, Datacom Systems

» *What a great piece of software: simple, elegant and extremely functional.*«

Ron Collette, Traxx Consulting

System requirements

- > Microsoft Windows XP with SP3 or higher, x86 or x64 platform
- > Microsoft Windows Server 2003 and 2003 R2, all editions with SP1 or higher, x86 or x64 platform
- > Microsoft Windows Vista SP1, x86 or x64 platform
- > Microsoft Windows 7, x86- oder x64-Plattform
- > Microsoft Windows Server 2008, x86 or x64 platform
- > Microsoft .NET Framework 2.0 (available at the Microsoft website, www.microsoft.com)

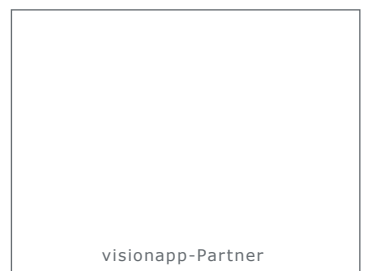
Licensing

- > Per named administrator
- > Enterprise licenses (country and global) are also available

Web addresses

Product Information & Online Shop
www.vrd2010.com

Support
www.visionapp.com/vrd-support



VISIONAPP™

visionapp is a leading provider of solutions for application delivery systems. Along with its partners, visionapp offers professional consulting, technologies and services that enable the smooth, efficient, and centralized management of complex system architectures.

Contact us
www.visionapp.com
info@visionapp.com

Easily administer your admin-tool favorites with visionapp Remote Desktop – **integrate and start all applications and websites** for your daily work from the central console directly.